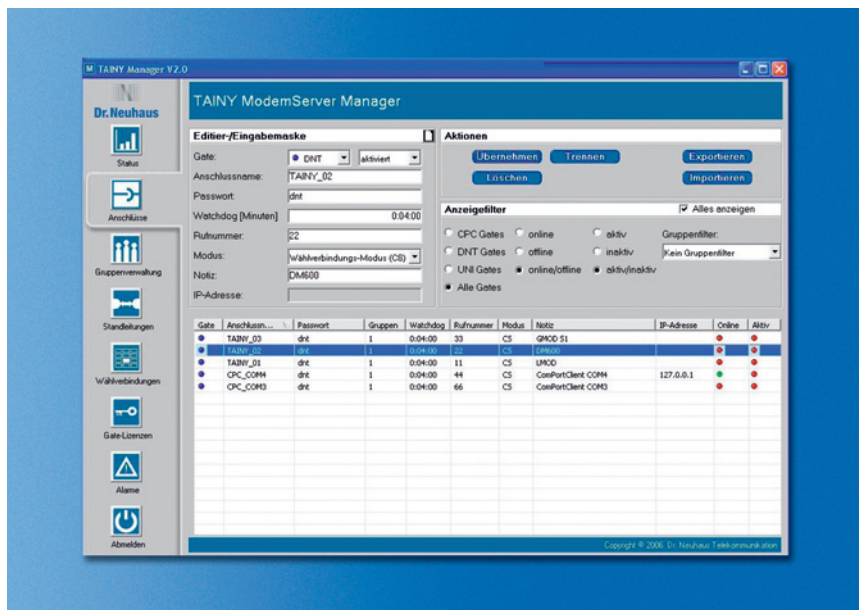


### Benefits:

- Process communication: simultaneous, with each other or with the control center
- Reduces communication costs
- Future-proof thanks to IP communication via the Internet or Intranet
- Process optimization due to real-time data collection
- Also compatible with existing, non-IP-based control center solutions
- Scalable purchasing costs – depending on the license, as a switching gateway for 10 connections, but is also able to accommodate up to 250 connections
- Easy integration and migration

### Key Features:

- Switching gateway for M2M communication
- Operates up to 250 connections
- Dial-up or leased line operation
- TSC protocol implemented
- IP telemetry-compliant (DIN 43863-4)
- Central operation, management and administration on one computer
- Scalable number of connections (10/25/50/100/250)
- Data encryption
- Group management
- Visualization of device status (e.g. online/offline/connection)
- Protocol of connection events



The TAINY ModemServer (TMS) from Dr. Neuhaus Telekommunikation is a software-based switching gateway for M2M communication via IP.

Acting like a telephone exchange, it facilitates wireless data exchange via GPRS between inaccessible and mobile processes or with the control center.

The processes can be telemetric or telecontrol systems which communicate with each other in an efficient and process-oriented way, independent of the industry, company size and location, and are controlled in real time.

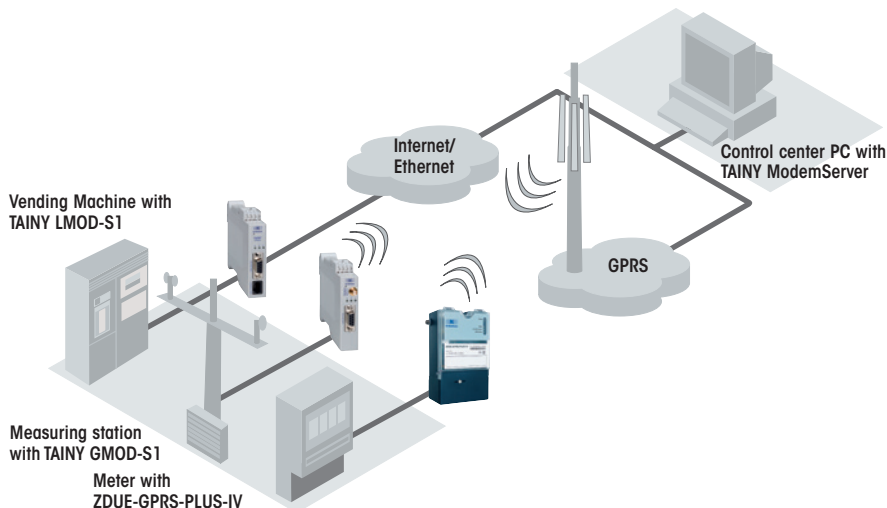
The TAINY ModemServer combines the benefits of traditional AT command based communication with mobility and cost advantages of IP-based, wireless network technology.



### System Components

- TAINY ModemServer
- Windows PC
- Compatible terminal devices such as:
  - TAINY GMOD-S1/S2
  - TAINY LMOD-S1
  - ZDUE-GPRS-PLUS-IV
  - ZDUE-LAN-PLUS-IV
  - ZDUE-GPRS-SyM<sup>2</sup>
  - ZDUE-LAN-SyM<sup>2</sup>

### Topology



### Technical Data

#### INTERFACE

<b>Application Interface</b>	Control center: Virtual ComPort via TAINY ComPortClient (up to 32); TAINY ModemServer-enabled devices (clients): Up to 250 connections (depending on the license)
<b>Administration</b>	Carried out by TAINY ModemServer Admin; input of the license key; setup and administration of groups, user accounts and their privileges
<b>Management</b>	Carried out by TAINY ModemServer Manager; setup and configuration of connections; setup of leased lines; view of status of leased and dial-up lines

#### FUNCTIONALITY

<b>System Requirements</b>	PC with Windows 2000 Server, Windows Server 2003, Windows 2000 Professional or XP Professional operating system; Recommended: Windows 2000 Server or Windows Server 2003 server operating systems Clock rate: At least 2 GHz recommended Main memory: At least 1 GB recommended Hard disk: At least 10 GB free memory Ethernet network adapter Screen resolution of at least 1024 x 768 pixels required Internet access with fixed or known IP address TAINY ModemServer (Kernel, Admin, Manager) and TAINY ComPortClient are installed on the same PC
<b>Connection</b>	Registration (clients): According to IP telemetry protocol (DIN 43863-4) or according to TSC protocol; leased lines; dial-up lines: Control via AT commands using previously stored virtual call number
<b>Manager Rights</b>	Different rights can be allocated to each manager account: Query of connections, connection editing, connection termination
<b>Groups</b>	Serves to combine connections to create groups; Manager rights can be limited to groups

#### MISCELLANEOUS

<b>Scope of Delivery</b>	CD with TAINY ModemServer(Kernel, Admin, Manager), ComPortClient and manual; license key according to number of connections
<b>Order Number</b>	TAINY ModemServer, Part No.: 313762 (10 connections), 313779 (25 connections), 313786 (50 connections), 313724 (100 connections), 313748 (250 connections)

Subject to technical modification. All data are based on manufacturer's specifications. No guarantee or liability for incorrect entries or omissions. All deliveries and services are provided by Dr. Neuhaus Telekommunikation GmbH on the basis of the "General Terms and Conditions" in the current version. All product names are trademarks of their respective owners. Dr. Neuhaus Telekommunikation GmbH 04/2009, Doc.-No.: 3137AQ010 Rev. 1.1

